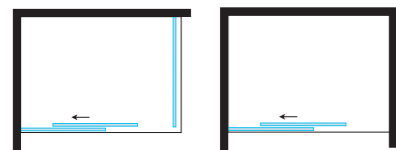


8PSC15



Porta scorrevole / Sliding door H 2000 mm

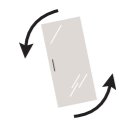


VERSIONE: ANGOLARE E NICCHIA

VERSION: CORNER AND NICHE

H 2000

altezza
height



reversibile
reversible



easy clean
easy clean

25 MM

regolazione
adjustment



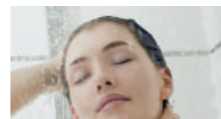
finitura cromo
chrome finish



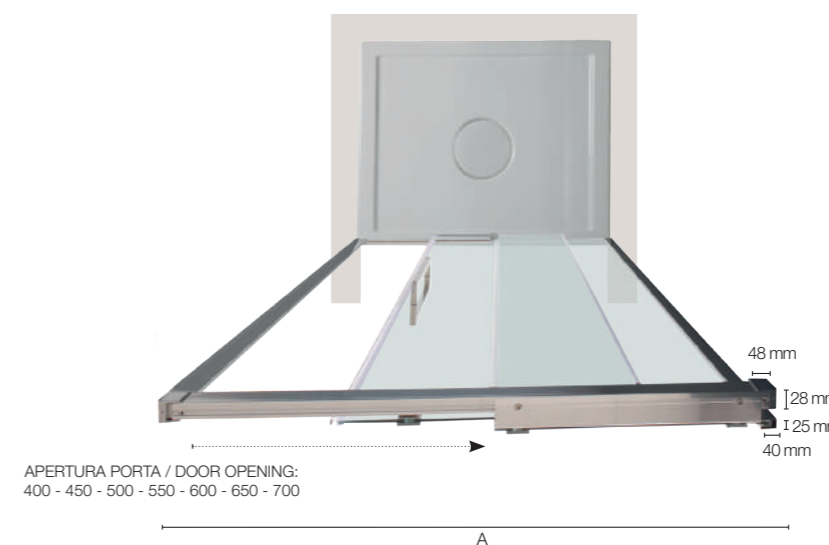
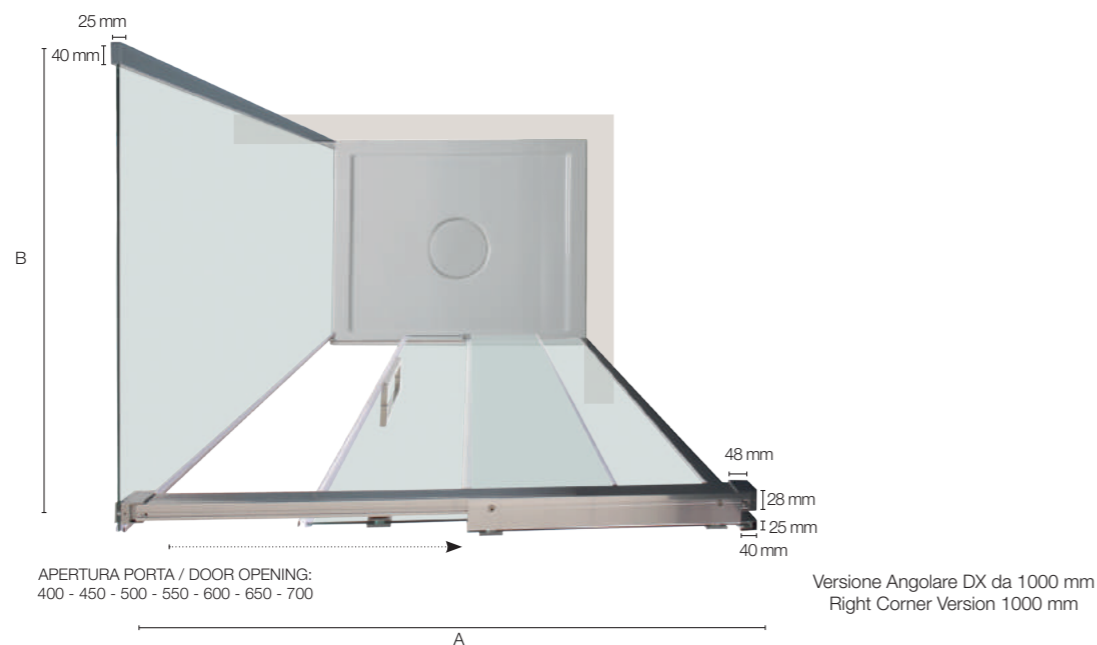
8MM
cristallo temperato
tempered glass



8TPA06
Profilo di allungamento
Adjustable profile
+ 15 mm



Cristallo trasparente
Transparent glass



PORTA ABBINATA A LATO FISSO DOOR MATCHED WITH FIXED PANEL

Specifiche tecniche / Technical specifications		
P/D mm	H/H mm	Estensibilità mm Extension mm
1000	2000	970-995
1100	2000	1070-1095
1200	2000	1170-1195
1300	2000	1270-1295
1400	2000	1370-1395
1500	2000	1470-1495
1600	2000	1570-1595
1700	2000	1670-1695
1800	2000	1770-1795

DIMENSIONI LATO FISSO 8KLF (B) FIXED SIDE PANEL SIZE 8KLF (B)

Specifiche tecniche / Technical specifications			
P/D mm	H/H mm	Peso vetro kg Glass weight kgs	Estensibilità mm Extension mm
700	2000	37	680-705
800	2000	42	770-795
900	2000	47	870-895

DIMENSIONI PORTA (A) (NICCHIA) DOOR SIZE (A) (NICHE)

Specifiche tecniche / Technical specifications				
L/W mm	H/H mm	Peso vetro kg Glass weight kgs	Apertura porta Door Opening	Estensibilità mm Extension mm
1000	2000	51	400	970-995
1100	2000	56	450	1070-1095
1200	2000	61	500	1170-1195
1300	2000	66	550	1270-1295
1400	2000	71	600	1370-1395
1500	2000	76	650	1470-1495
1600	2000	81	700	1570-1595
1700	2000	86	700	1670-1695
1800	2000	91	700	1770-1795