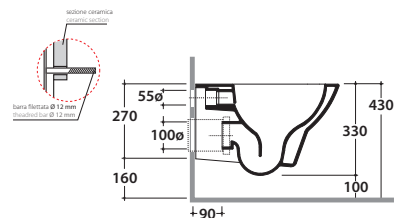
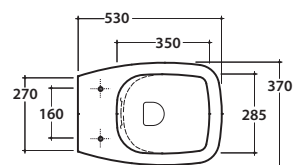


DAILY VASO SOSPESO SENZABRIDA® DAS03.BI

CE EN 997:2015

GLOBO



Effetto antibatterico su ceramica
BATAFORM®
Ceramic antibacterial effect
BATAFORM®



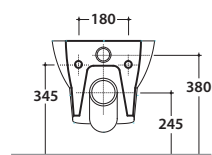
Scarico ottimizzato a 4/2,6 litri
Drain 4/2,6 lt



Prodotto smaltato con
CERASLIDE®
Glazed product with
CERASLIDE®

Cod. **DAS03.BI**

Vaso sospeso SENZABRIDA® 53.37 h33 cm. Scarico 4 / 2,6 Lt. Completo di fissaggi. Peso 21 Kg
Wall-hung Wc 53.37 h33 cm No Rim. Drain 4/2,6 Lt. Fixing kit included. Weight 21 Kg



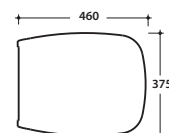
Coprivaso con sistema di
cerniere a sgancio rapido
Seat-cover with hinge system
to quick release



Trattamento antibatterico per sedili in
versione bianco lucido
Antibacterial treatment on toilet seats
in shiny white

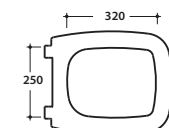
Cod. **DAR19BI**

Coprivaso rimovibile in duroplast con chiusura tradizionale. Peso 3 Kg
Removable duroplast seat-cover with traditional closing system. Weight 3 Kg



Cod. **DAR20BI**

Coprivaso rimovibile in duroplast con chiusura rallentata. Peso 3 Kg
Removable duroplast seat-cover with soft-closing system. Weight 3 Kg



Cod. **VA132**

Riduttore flusso di scarico.
Flow reductor.



Cod. **PU001**

Protezione antiurto e acustica.
Acoustic and crash protection.



Cod. **FI002**

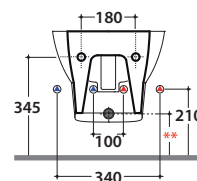
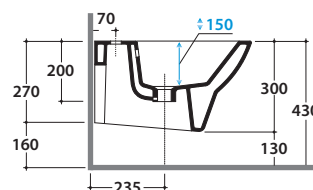
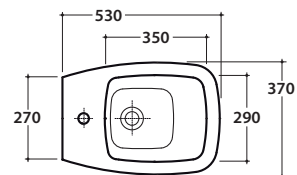
Staffa di fissaggio a "L". Peso 2,5 Kg
Fixing brackets for W/H sanitary. Weight 2,5 Kg

water label		
Average flushing volume (litres)		
Max. 3.5		3,38
Max. 4.5		
Max. 5.5		
Max. 6		
> 6		

www.europeanwaterlabel.eu

DAILY BIDET DAS09.BI

GLOBO



** Per installazione con / For installation with:
- Sifone a "S" / Siphon "S" - mm 150
- Sifone SF052 / Siphon SF052 - mm 120

Cod. **DAS09.BI**

Bidet sospeso monoforo con sistema di fissaggio dal basso nascosto.

Completo di fissaggi. peso 18 Kg

Wall-hung bidet provided with lower hidden fixing system.

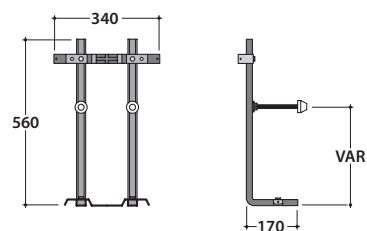
Fixing kit included. Weight 18 Kg



Cod. **FI002.BI**

Staffa di fissaggio a "L".

Fixing brackets for W/H sanitary.



Cod. **PU001.BI**

Protezione antiurto e acustica.

Acoustic and crash protection.