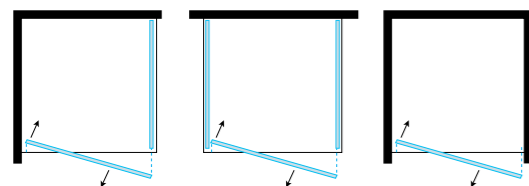


FPB40

Porta battente / Hinge door H 2000 mm

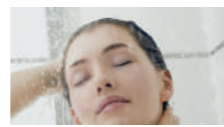
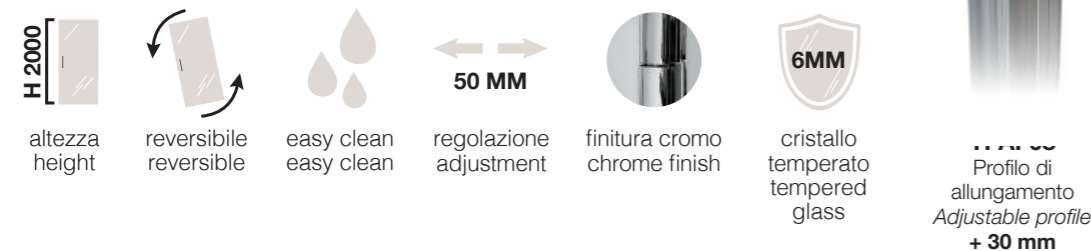
NELLA FPB40 LA PORTA CHE MISURA MM 700, 800 E 900 HA L'APERTURA AD ANTA UNICA.

THE FPB40 DOOR MEASURES 700, 800 OR 900 AND IS AVAILABLE WITH SINGLE DOOR OPENING ONLY.

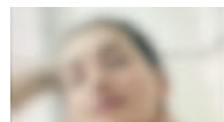


VERSIONE: ANGOLARE, CENTRO PARETE E NICCHIA

VERSION: CORNER, CENTER WALL AND NICHE



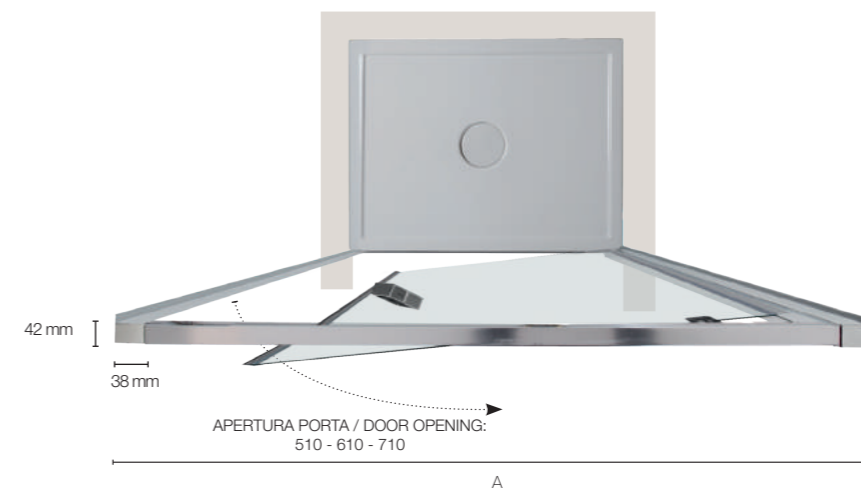
Cristallo trasparente
Transparent glass



Cristallo satinato
Frosted glass



Cristallo Cincillà
Chinchilla glass

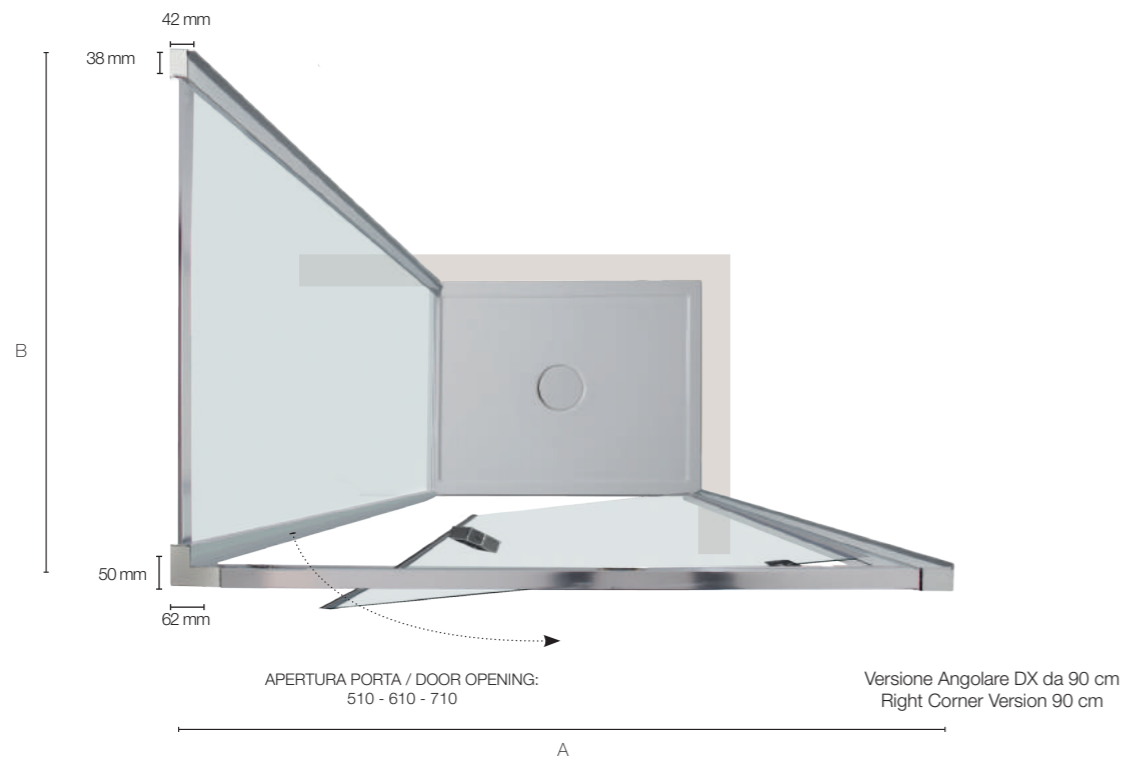


Versione Nicchia
Niche Version

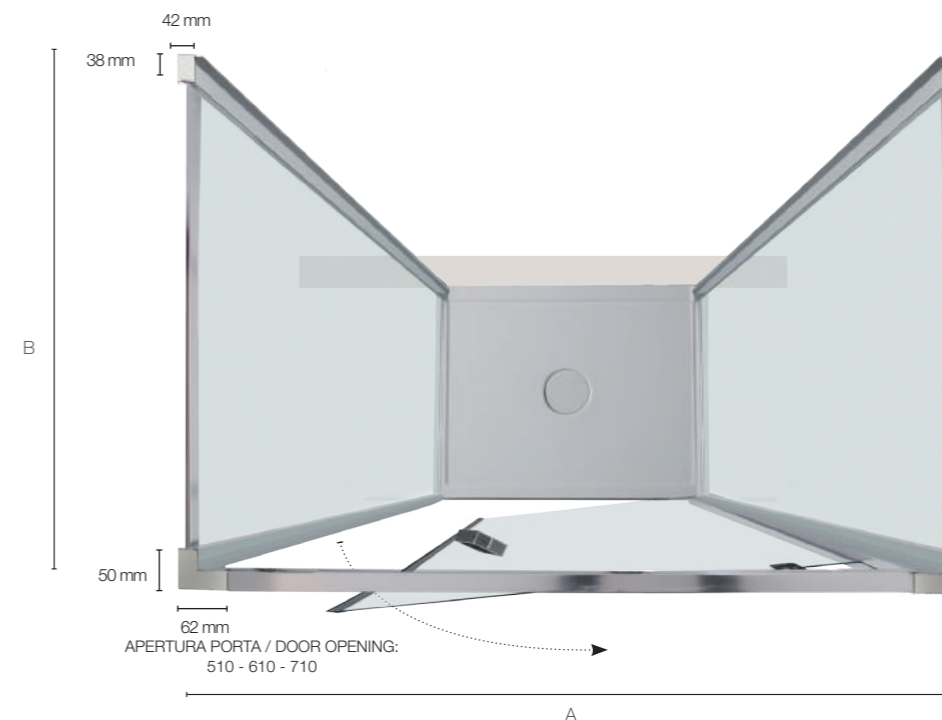
DIMENSIONI PORTA (A) (NICCHIA)

DOOR SIZES (A) (NICHE)

Specifiche tecniche / Technical specifications				
L/W mm	H/H mm	Peso vetro kg	Apertura porta	Estensibilità mm
		Glass weight kgs	Door opening	Extension mm
700	2000	24	510	650-700
800	2000	28	610	750-800
900	2000	30	710	850-900



Versione Angolare DX da 90 cm
Right Corner Version 90 cm



Versione Centro Parete
Center Wall Version

PORTA ABBINATA A LATO FISSO

DOOR MATCHED WITH FIXED PANEL

Specifiche tecniche / Technical specifications		
P/D mm	H/H mm	Estensibilità mm Extension mm
700	2000	662-710
800	2000	762-810
900	2000	862-910

DIMENSIONI LATO FISSO (B) FISSO

FIXED SIDE PANEL SIZE (B) FISSO

Specifiche tecniche / Technical specifications			
P/D mm	H/H mm	Peso vetro kg	Estensibilità mm
		Glass weight kgs	Extension mm
700	2000	24	665-715
800	2000	27	765-815
900	2000	30	865-915
1000	2000	34	965-1015

PORTA ABBINATA A 2 LATI FISSI

DOOR MATCHED WITH 2 FIXED PANELS

Specifiche tecniche / Technical specifications		
P/D mm	H/H mm	Estensibilità mm Extension mm
700	2000	674-720
800	2000	774-820
900	2000	874-920