

PABIS000000M

sanitari sospesi 53/wall hung sanitary wares

codice  
code



Bidet Pratica sospeso.  
Pratica wall hung bidet.

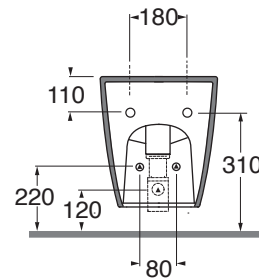
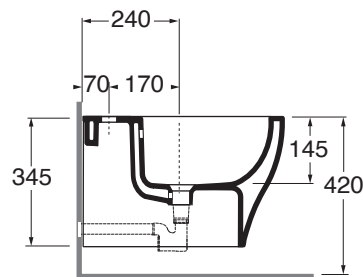
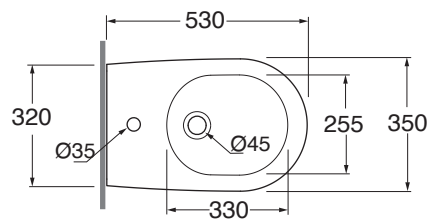
bianco lucido/shiny white

PABIS000000MBI

CM 53x35x34,5

plt italy pz.18- plt export pcs.20

kg 20



scala/scale 1:20 dimensioni/dimensions in mm

Ceramica



bianco lucido  
shiny white

Complementi/complements:

Codice  
code



Piletta automatica con troppo pieno  
Automatic waste system with over flow

PILTR

kg 0,5

TECHNICAL SHEET n°: <b>01</b>	DESIGNER: <b>OFFICINA AZZURRA</b>	CODE: <b>PABIS000000M</b>	Azzurra sanitari in ceramica S.p.a. via Civita Castellana snc 01030 Castel S. Elia (VT) - ITALY Tel.+39.0761 518155 Fax.+39.0761 514560	
SHEET FORMAT: <b>A4</b>	ISO	REVISION: <b>03</b>	SCALE: <b>1:20</b>	DATE: <b>11/01/2023</b>
REGULATIONS: <b>CE EN 14528 / EN35 / Dop-14528 *</b>				
All the measurements respect the tolerances provided by the "AZZURRA QUALITY GUIDELINES".				



\* Regulations here shown are exclusively referred to ceramic items

PAVCSP000000 sanitari sospesi / wall hung sanitary wares

codice  
code



Vaso Pratica sospeso.  
Pratica wall hung WC.

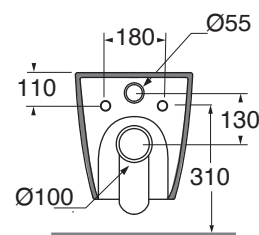
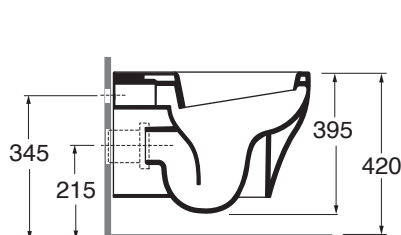
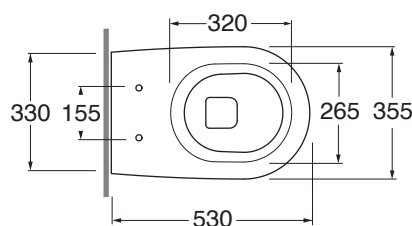
bianco lucido/shiny white

PAVCSP00000BI

CM 53x35,5h39,5

plt italy pz.18 - plt export pcs.20

kg 23,5



Tecnologie/technologies:



watersaving

scala/scale 1:20 dimensioni/dimensions in mm

Ceramica



bianco lucido  
shiny white

Complementi/complements:

Codice  
code



Sedile termoisolante per vaso  
Thermosetting cover-seat

bianco lucido/ shiny white

PRA 1800



Kit fissaggio a "elle" per vaso e bidet sospesi  
"L" fixing kit for wall-hung wc and bidet

KIT 2000 C



Sedile termoisolante con chiusura frizionata  
Thermosetting soft close seat cover

bianco lucido/ shiny white

PRA 1800/F



Protezione antiurto e acustica  
per vaso e bidet sospesi  
Shock absorption and acoustic protection  
for wall-hung wc and bidet

ISAC

TECHNICAL SHEET n°: <b>01</b>	DESIGNER: <b>OFFICINA AZZURRA</b>	CODE: <b>PAVCSP000000</b>	Azzurra sanitari in ceramica S.p.a. via Civita Castellana snc 01030 Castel S.Elia (VT) - ITALY Tel.+39.0761 518155 Fax.+39.0761 514560		
SHEET FORMAT: <b>A4</b>	ISO	REVISION: <b>03</b>	SCALE: <b>1:20</b>	DATE: <b>10/11/2022</b>	
REGULATIONS: <b>CE EN 997 / EN33 / Dop-997 *</b>					
All the measurements respect the tolerances provided by the "AZZURRA QUALITY GUIDELINES".					

\* Regulations here shown are exclusively referred to ceramic items